

EPEE

The European Partnership for Energy and the Environment



Welcomes you
to our high level
stakeholder
workshop

**Heat Pumps:
the renewable
way forward**

Who is EPEE?



EPEE is a broad based HVACR industry association supporting the promotion of energy efficiency and the freedom of refrigerant choice



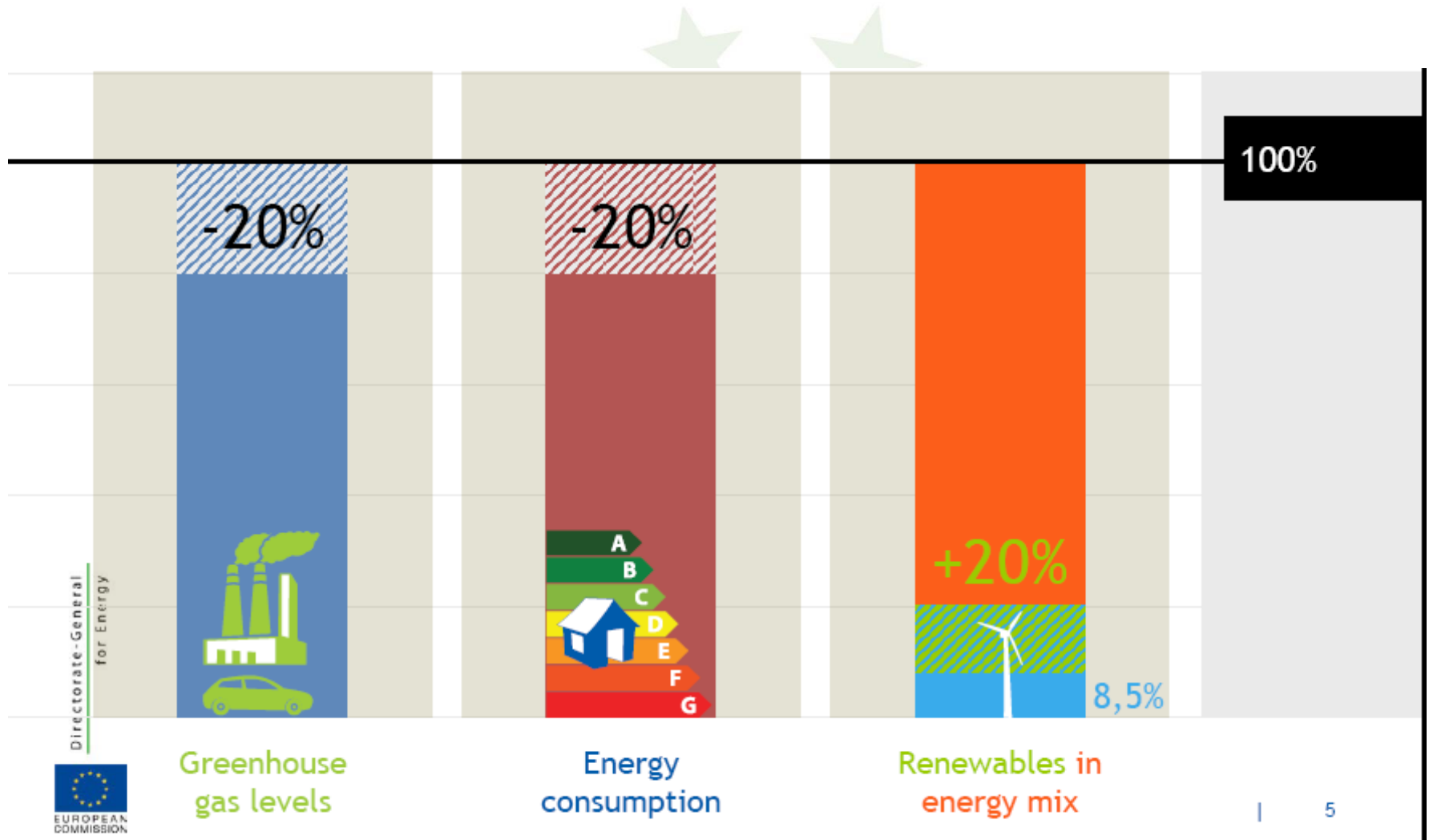
27 member companies, **12** member associations

... **producing a/c equipment, components, refrigeration systems, heat pumps, refrigerants**

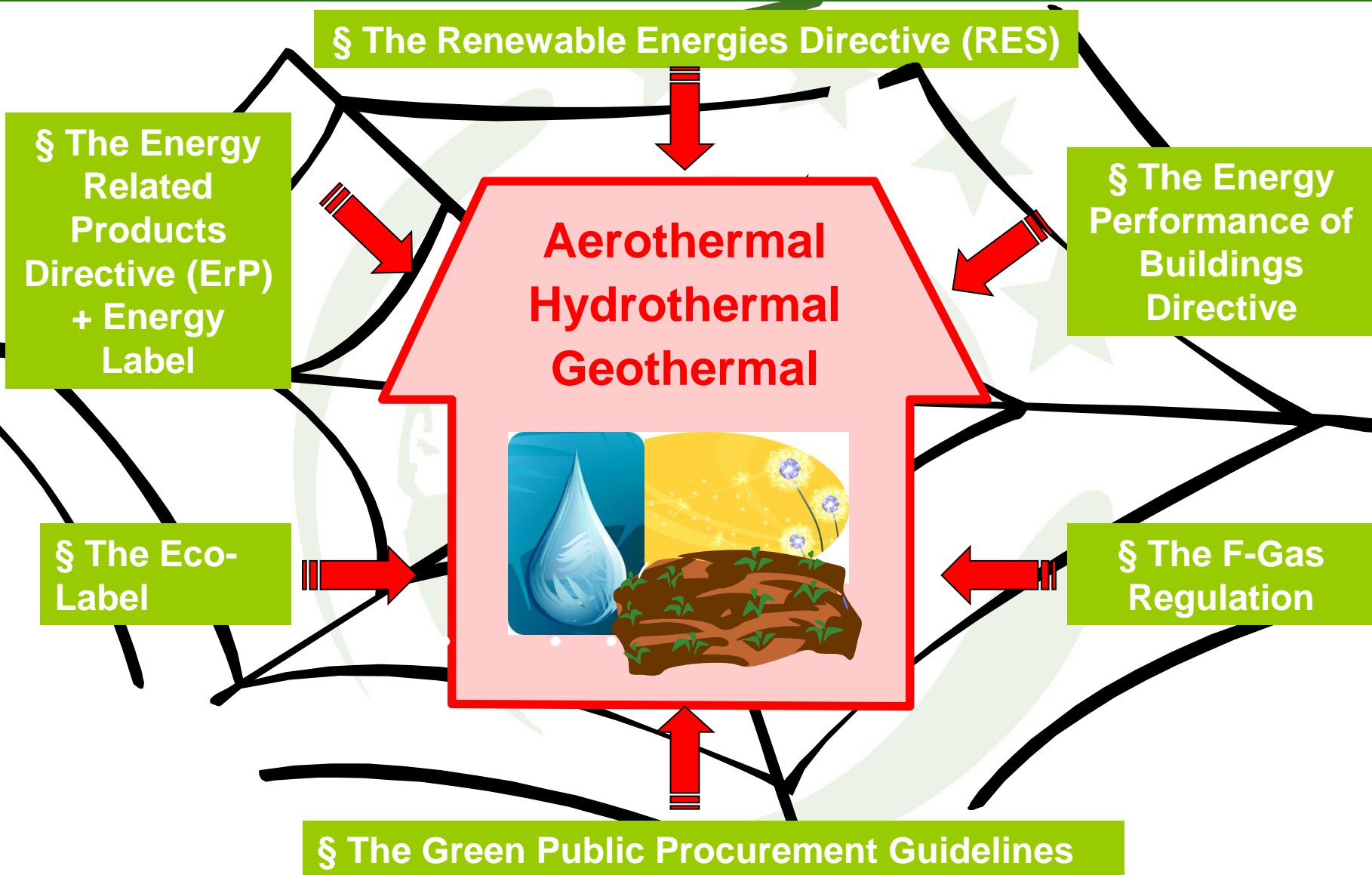
... employing more than **200,000** people in Europe

... And realising a turnover of more than **€ 30 billion** in Europe

The EU 20 – 20 – 20 Target



Heat pumps in the EU's regulatory context



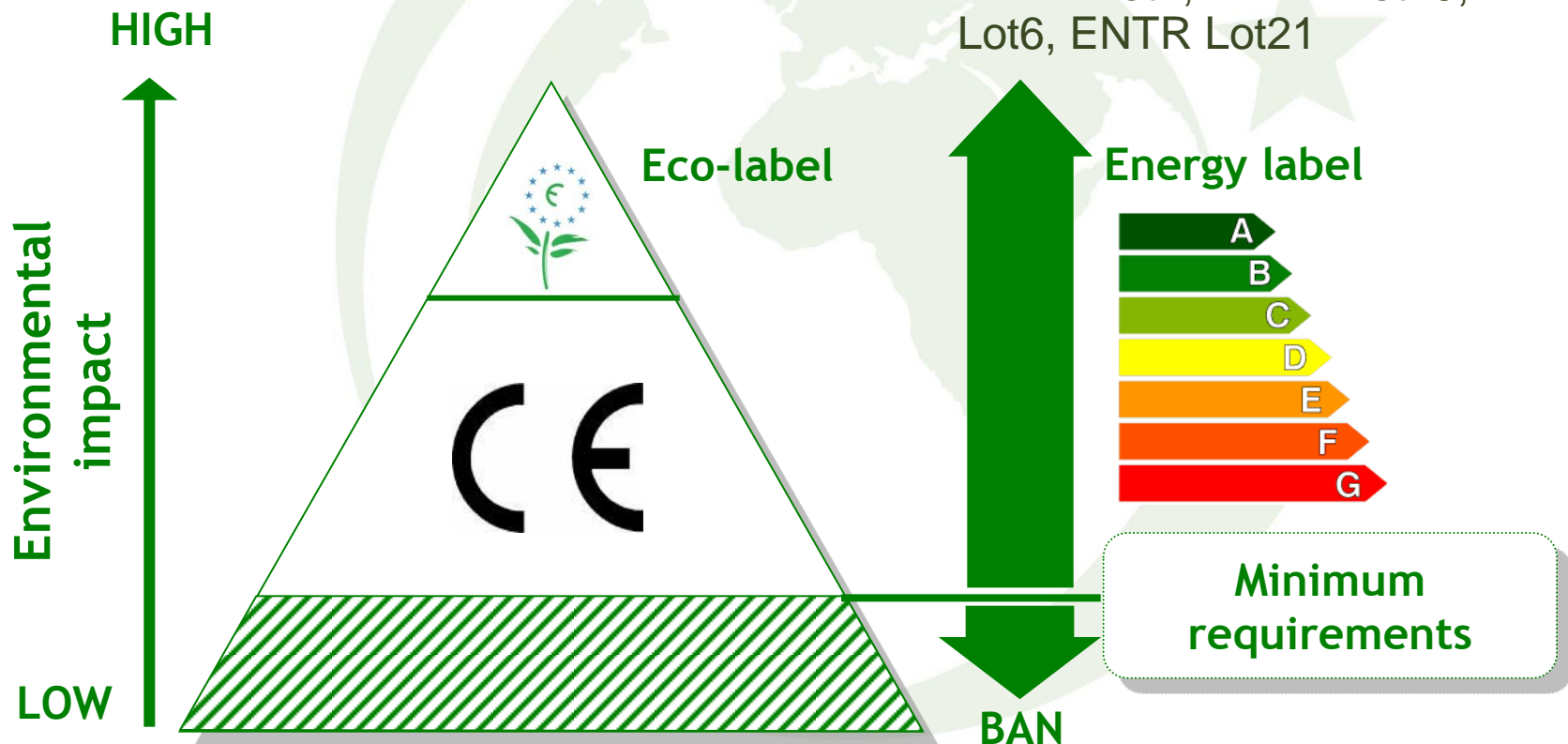
Focus on interactions between: Eco-Design – Energy Label – Eco-Label

Eco-Label: main criteria for heat pumps:

- Gas driven, electrically driven, absorption
- Excludes hot water only and cooling only HPs
- Efficiency in heating and cooling mode
- Refrigerants GWP < 2000

Eco-Design (ErP): HP criteria set in:

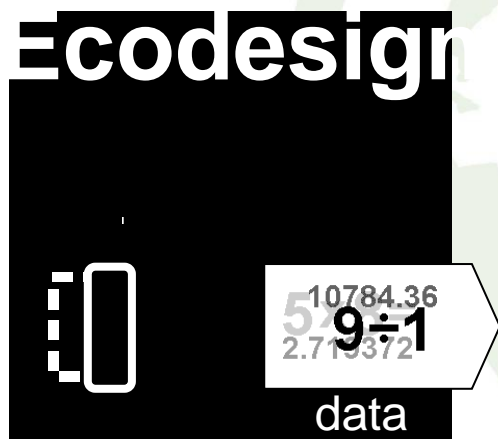
- ENER Lot1, ENER Lot10, ENTR Lot6, ENTR Lot21



Focus on interactions between: RES - Eco-design – EPBD

Heat pumps ensure high efficiency: ex. Lot1

Heat pumps help achieving the 20% RES target



Target: minimum product energy efficiency criteria



Target: Nearly zero energy buildings

Heat pumps are part of the solution to achieve (nearly) zero energy buildings

Focus on interactions between: F-Gas – Eco-design – EPBD – RES

RES:

- Promotes and incentivizes heat pump technology
- As heat pumps are mainly relying on HFCs this will lead to increased use of HFCs

EPBD:

- Systematic A/C inspections in buildings will reduce leakages

Eco-Design:

- Reduces indirect emissions
- Improved product design may lead to lower refrigerant charges and reduce leakages
- Energy Label:
Lower GWP refrigerants considered
- Eco Label:
Refrigerant GWP = criterion



**Impact to be taken
into account for F-
Gas Review**

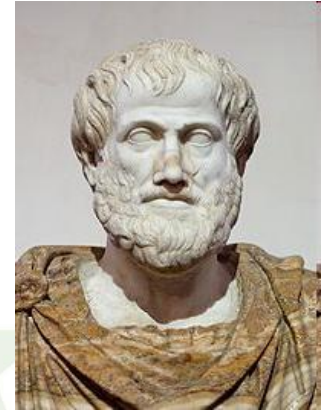
Conclusion:

To achieve the EU's 20-20-20 target

Consistent legislation is key:

- ➔ To tap the full potential of heat pump technology

Aristoteles, 384 – 322 AC
„The whole is more than
the sum of its parts“



What else? The goal of today's workshop:

- **To exchange best practices and experiences:**
 - ➔ What are the barriers to the uptake of heat pumps and what can be done to overcome these?
- **To develop a heat pump manifesto**
 - ➔ To promote heat pumps and establish them as a key technology to achieve the EU's 20-20-20 target

